



## OSGeo Intro

FOSS4G 2010, Barcelona  
2010/09/09

Tyler Mitchell, Executive Director

52.1534 N, 122.1498 W 

**TYLER MITCHELL**

---

Executive Director

[OSGeo.org](http://OSGeo.org)

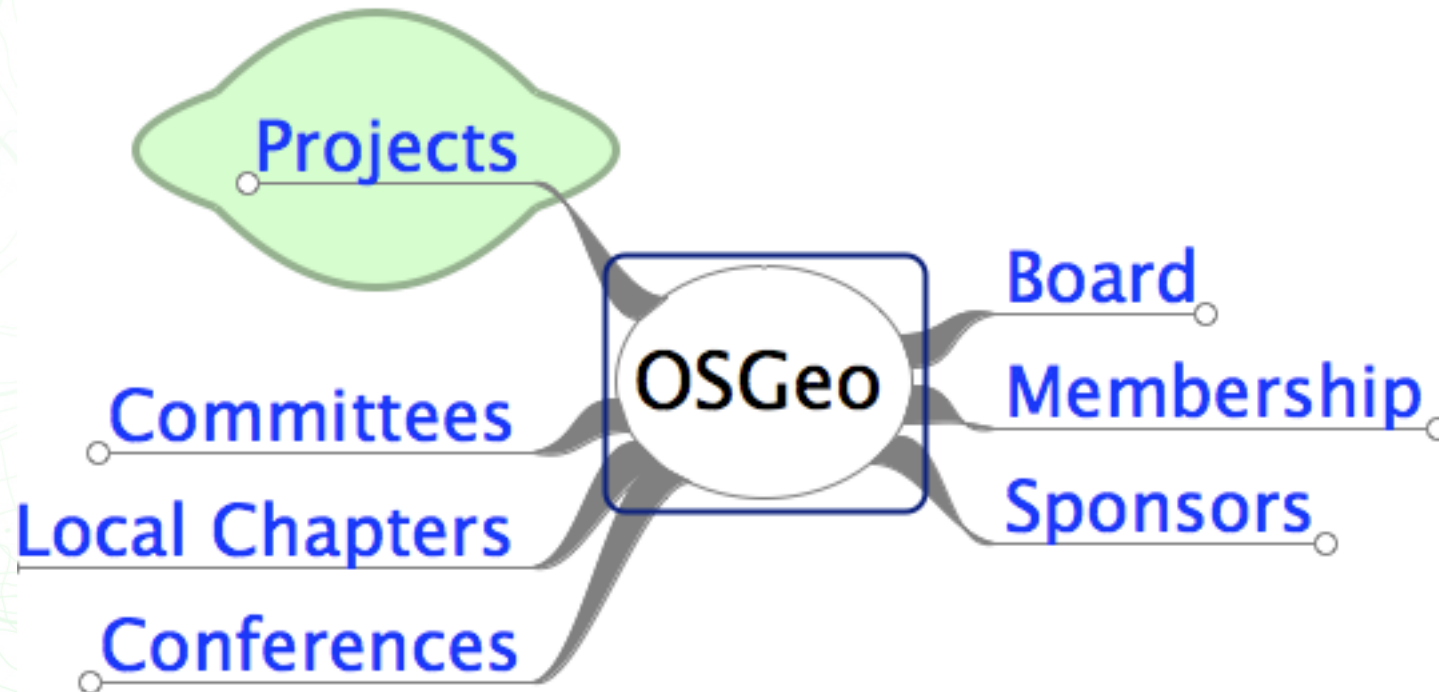
---

[tmitchell@osgeo.org](mailto:tmitchell@osgeo.org)

Tel +1-250-303-1831



# OSGeo Ecosystem

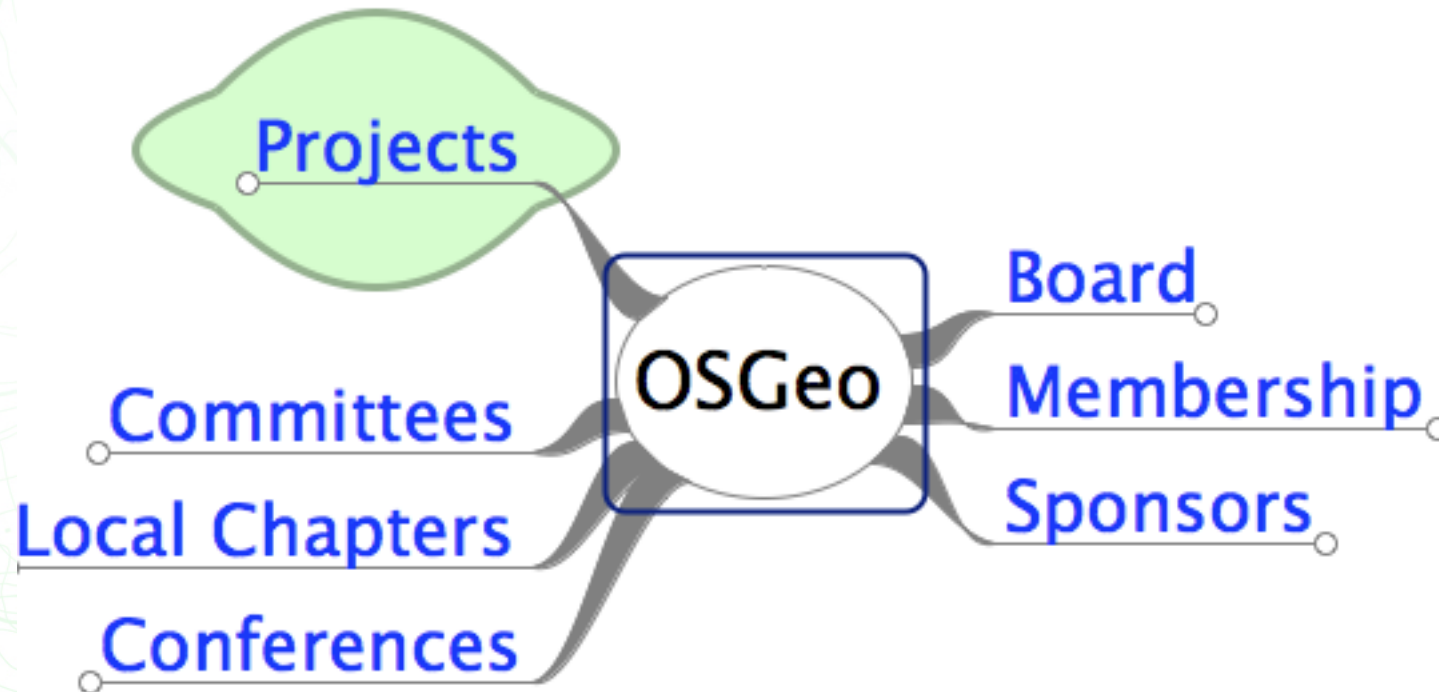


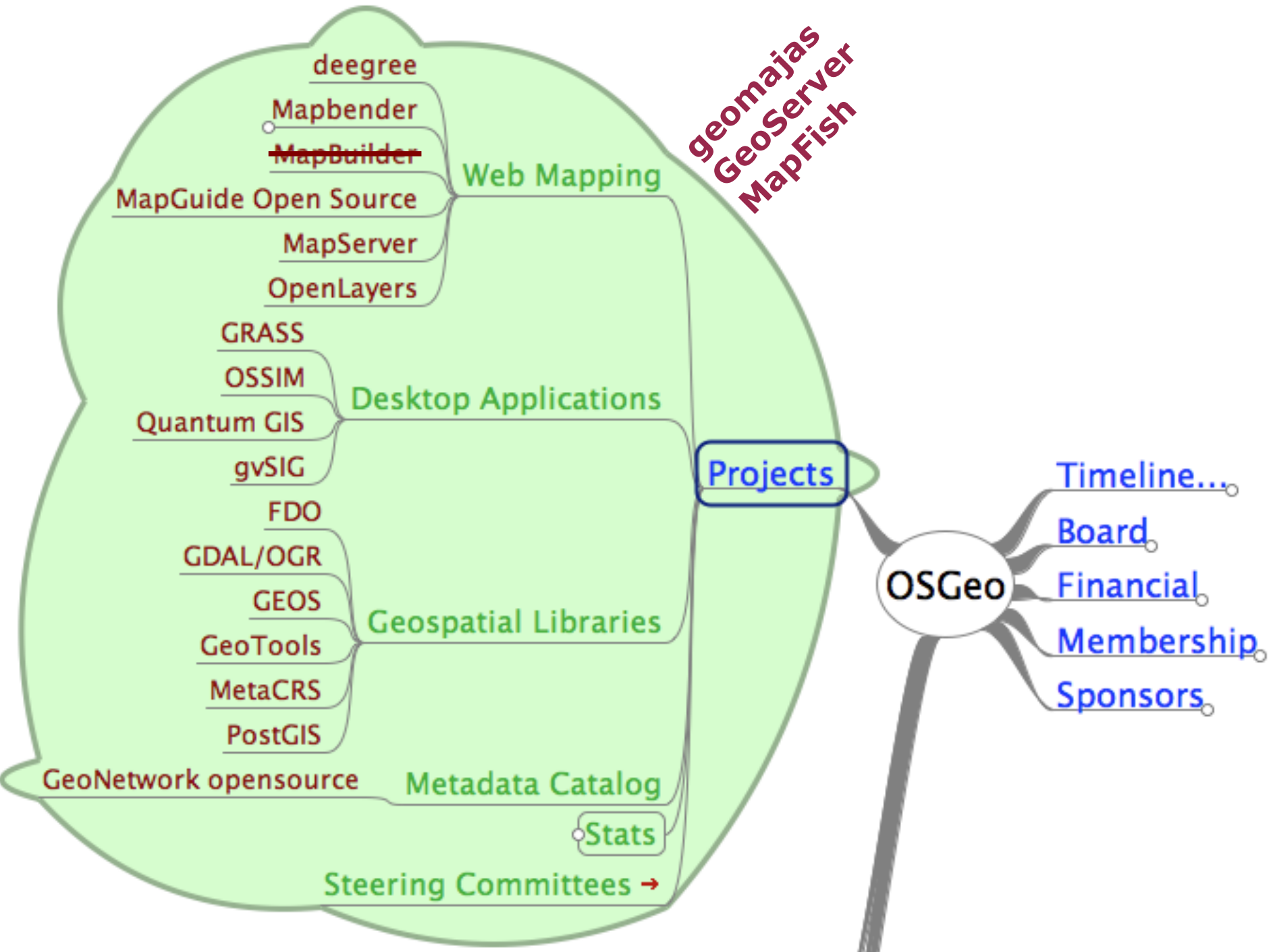
## Board of Directors

- Arnulf Christl (President)
- Chris Schmidt
- Daniel Morissette\*
- Frank Warmerdam
- Geoff Zeiss
- Jeff McKenna
- Tim Schaub\*
- Markus Neteler
- Ravi Kumar

Thank you Ari & Howard for two years of service!

# OSGeo Ecosystem





geomajas  
GeoServer  
MapFish

### Web Mapping

- deegree
- Mapbender
- ~~MapBuilder~~
- MapGuide Open Source
- MapServer
- OpenLayers

### Desktop Applications

- GRASS
- OSSIM
- Quantum GIS
- gvSIG

### Geospatial Libraries

- FDO
- GDAL/OGR
- GEOS
- GeoTools
- MetaCRS
- PostGIS

### Metadata Catalog

GeoNetwork opensource

Stats

Steering Committees →

## OSGeo

- Timeline...
- Board
- Financial
- Membership
- Sponsors

19 projects

12.7 MLOC

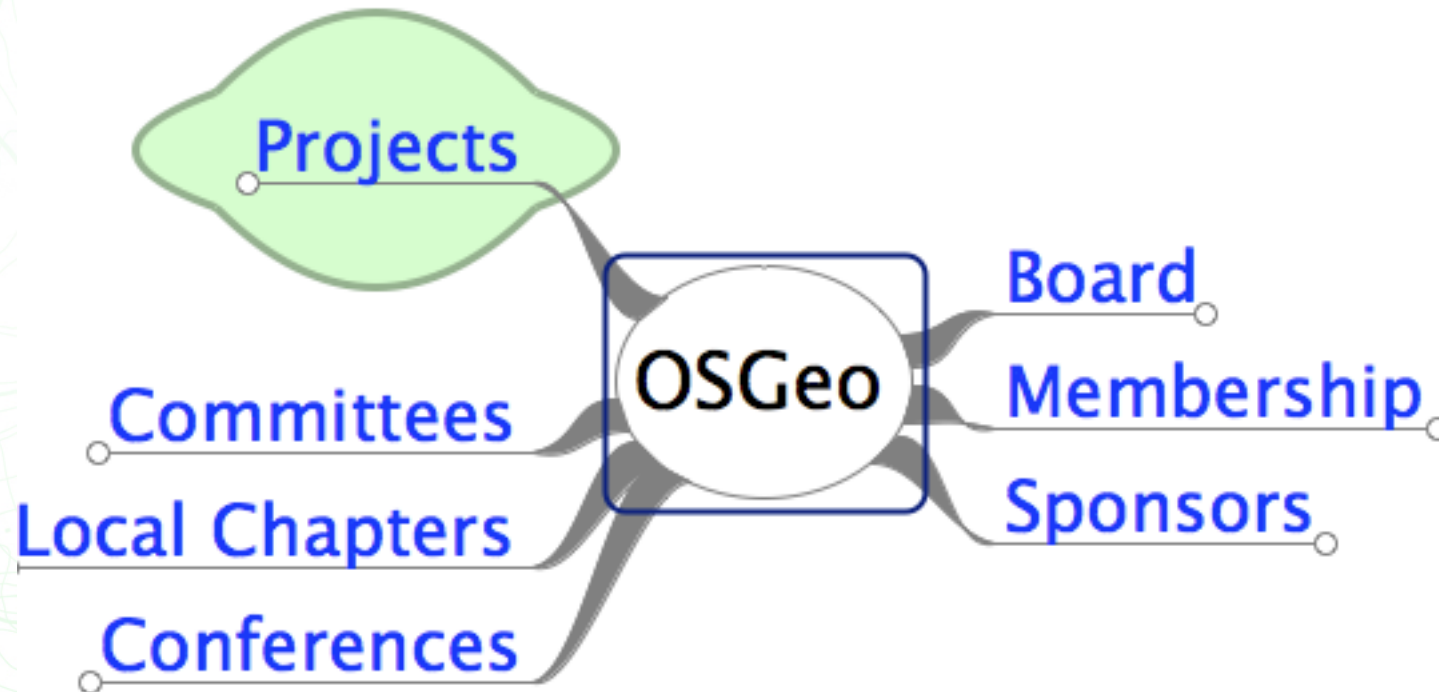
657 contributors

301 in 12 months

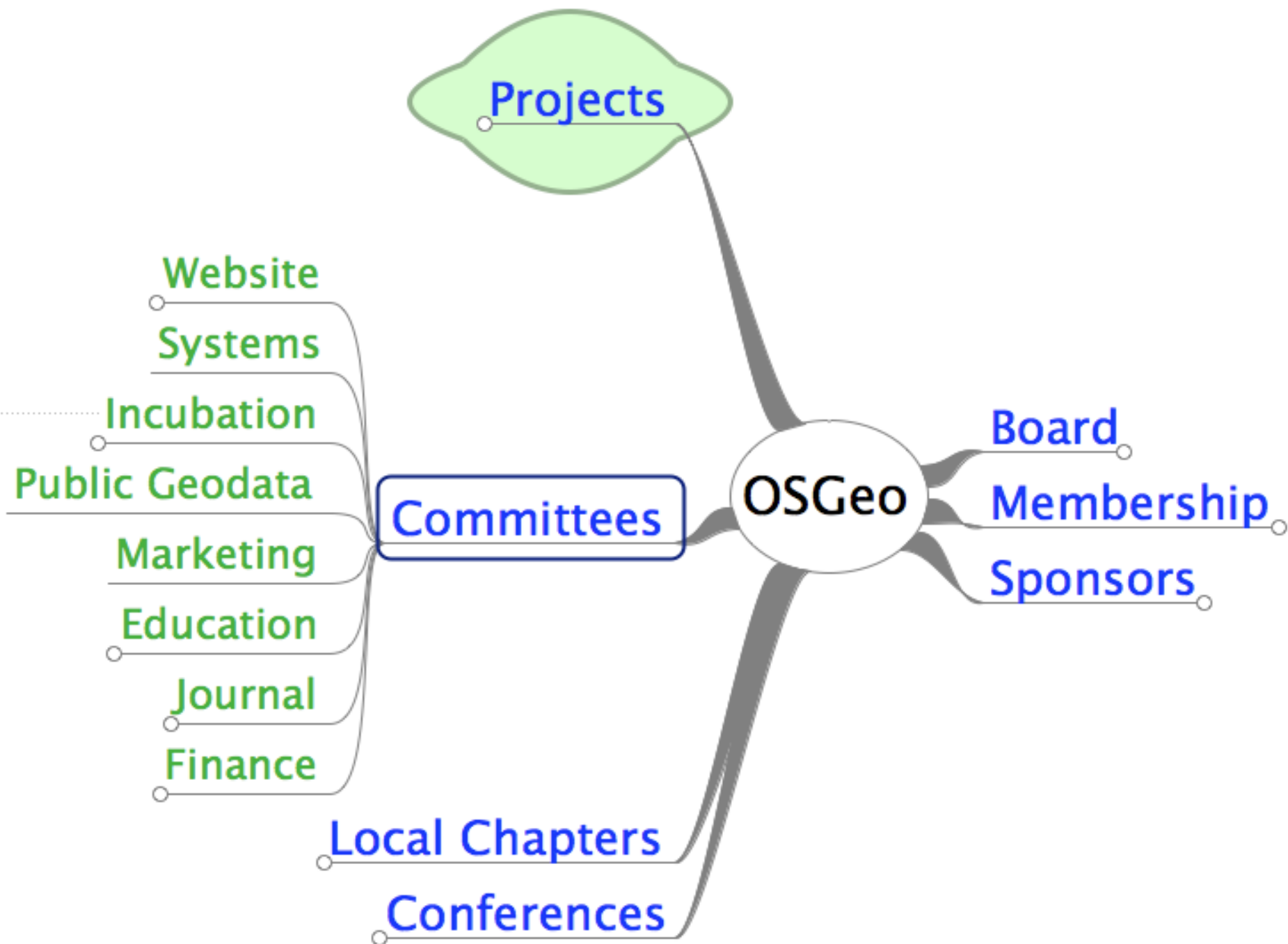
Project (link to stats page) ▲	Contributors (last 12mos) ▾	Contributors (total) ▾	Lines of code ▾
Geomajas	9	15	227598
GeoServer	26	53	511153
Mapbender	17	37	873482
MapFish	10	17	153555
Community MapBuilder	9	24	141198
deegree	12	27	664726
Feature Data Objects (FDO)	16	32	1106885
GDAL	21	36	690593
GeoNetwork opensource	7	19	830470
GEOS	6	17	134482
GeoTools	29	78	1672369
GRASS GIS	18	64	547834
gvSIG Desktop	42	61	1797359
MapGuide Open Source	19	42	377020
MapServer	12	34	176972
OpenLayers	9	14	114389
OSSIM	8	26	979165
PostGIS	8	18	173982
Quantum GIS	23	43	1594355
<b>Total</b>	<b>301</b>	<b>657</b>	<b>12767587</b>

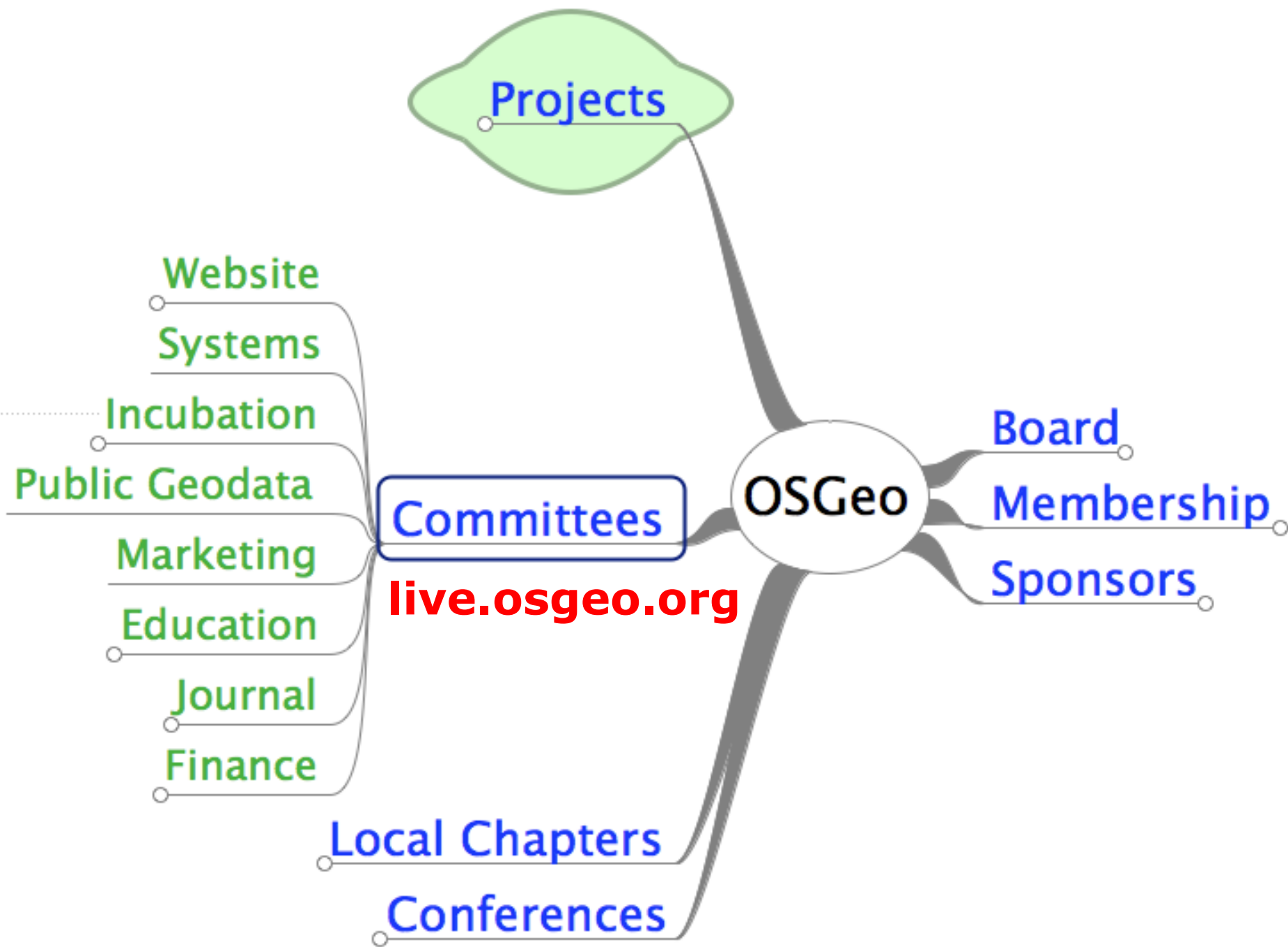
<http://ohloh.net/stacks/151>

# OSGeo Ecosystem











Annual Report 2008  
OSGeo Journal Vol. 5 - May 2009





{ logo }



{ powerpoint template }



{ stickers & buttons }



{ brand standards manual }



{ letterhead & business card }



{ brochure }



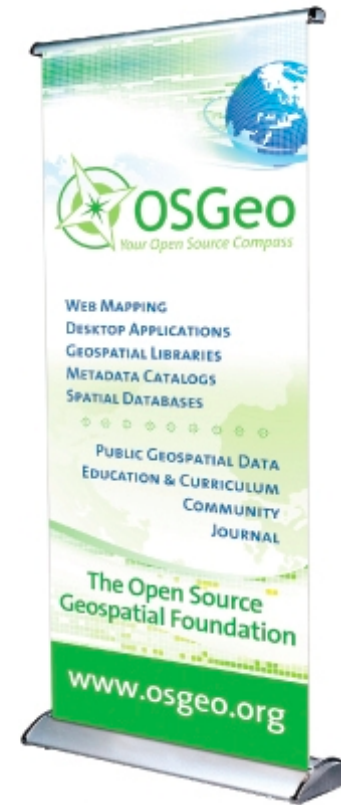
{ dvd template }



{ pdf coverpage }

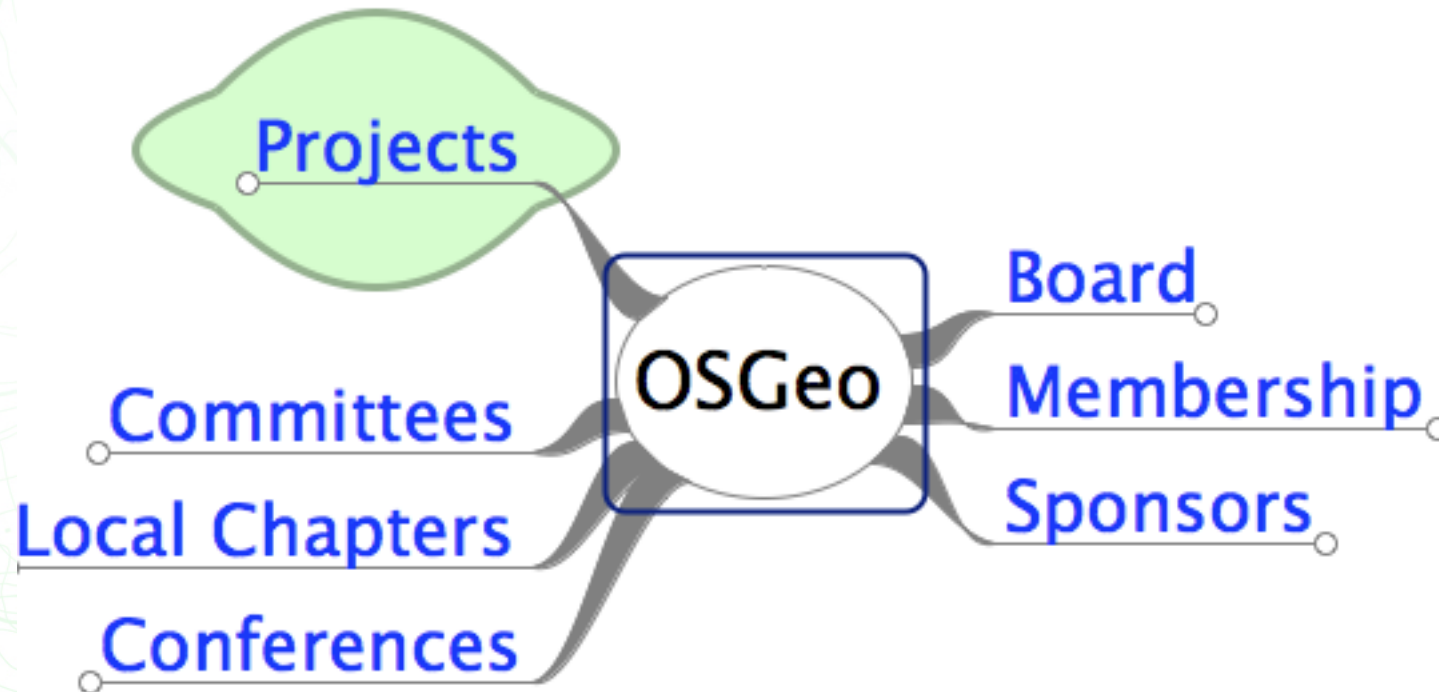


{ postcard }



{ pop-up banner }

# OSGeo Ecosystem



# Official OSGeo Chapters

Chapters that have applied for official status and have been approved by the OSGeo Board of Directors

- British Columbia, Canada OSGeo Chapter
- Cascadia OSGeo Chapter
- California, USA OSGeo Chapter
- China OSGeo Chapter
- FOSSGIS e.V.: German Language OSGeo Chapter
- French language OSGeo Chapter
- India OSGeo Chapter
- Italian language OSGeo Chapter
- Japan OSGeo Chapter
- Korean Language OSGeo Chapter
- New Mexico, USA OSGeo Chapter
- Ottawa, Canada OSGeo Chapter
- Poland OSGeo Chapter
- Quebec OSGeo Chapter
- Sénégal OSGeo Chapter
- Spanish Language OSGeo Chapter
- Twin Cities, USA OSGeo Chapter
- United Kingdom OSGeo Chapter
- Vietnam OSGeo Chapter

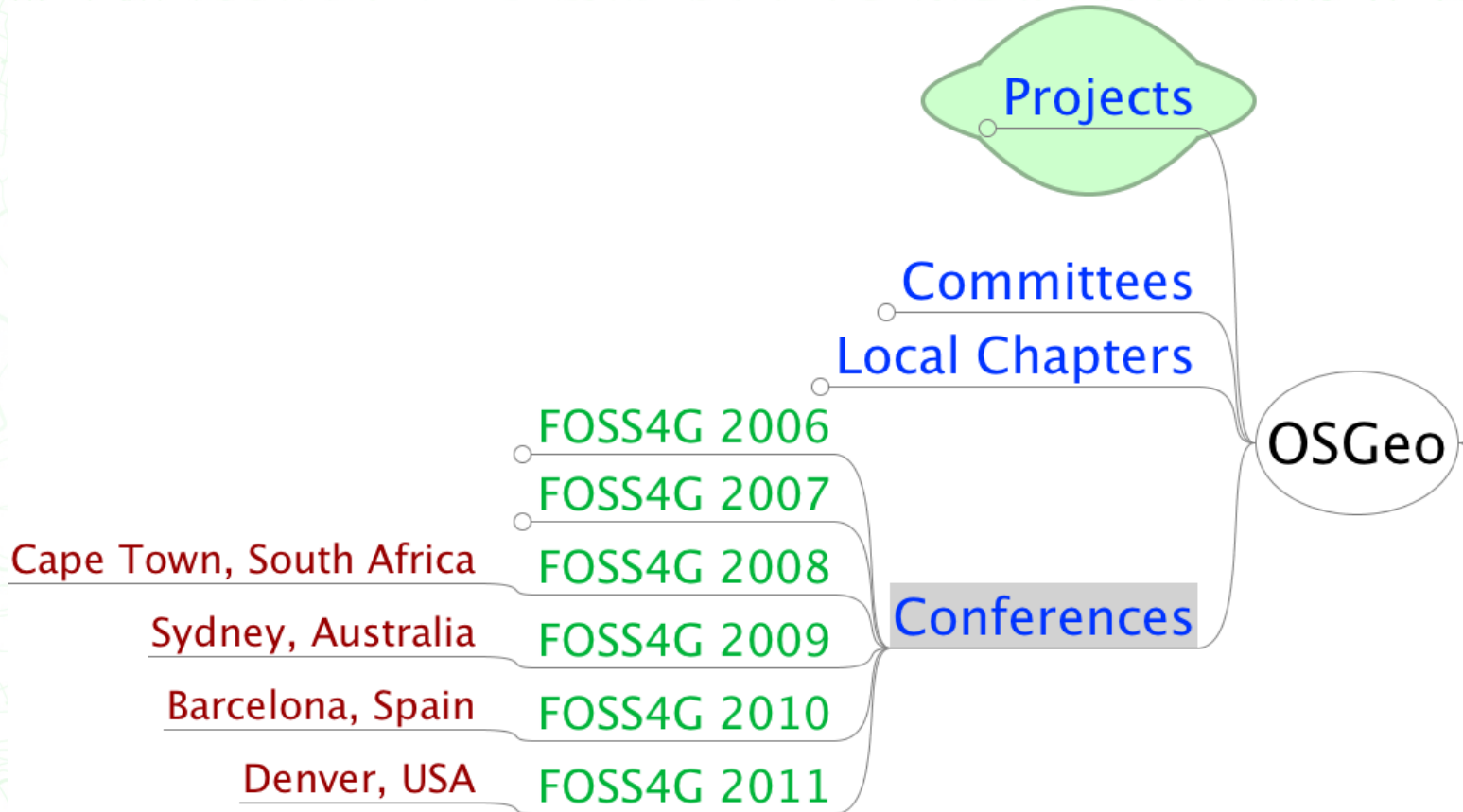
[osgeo.org/local](http://osgeo.org/local)

OSGeo

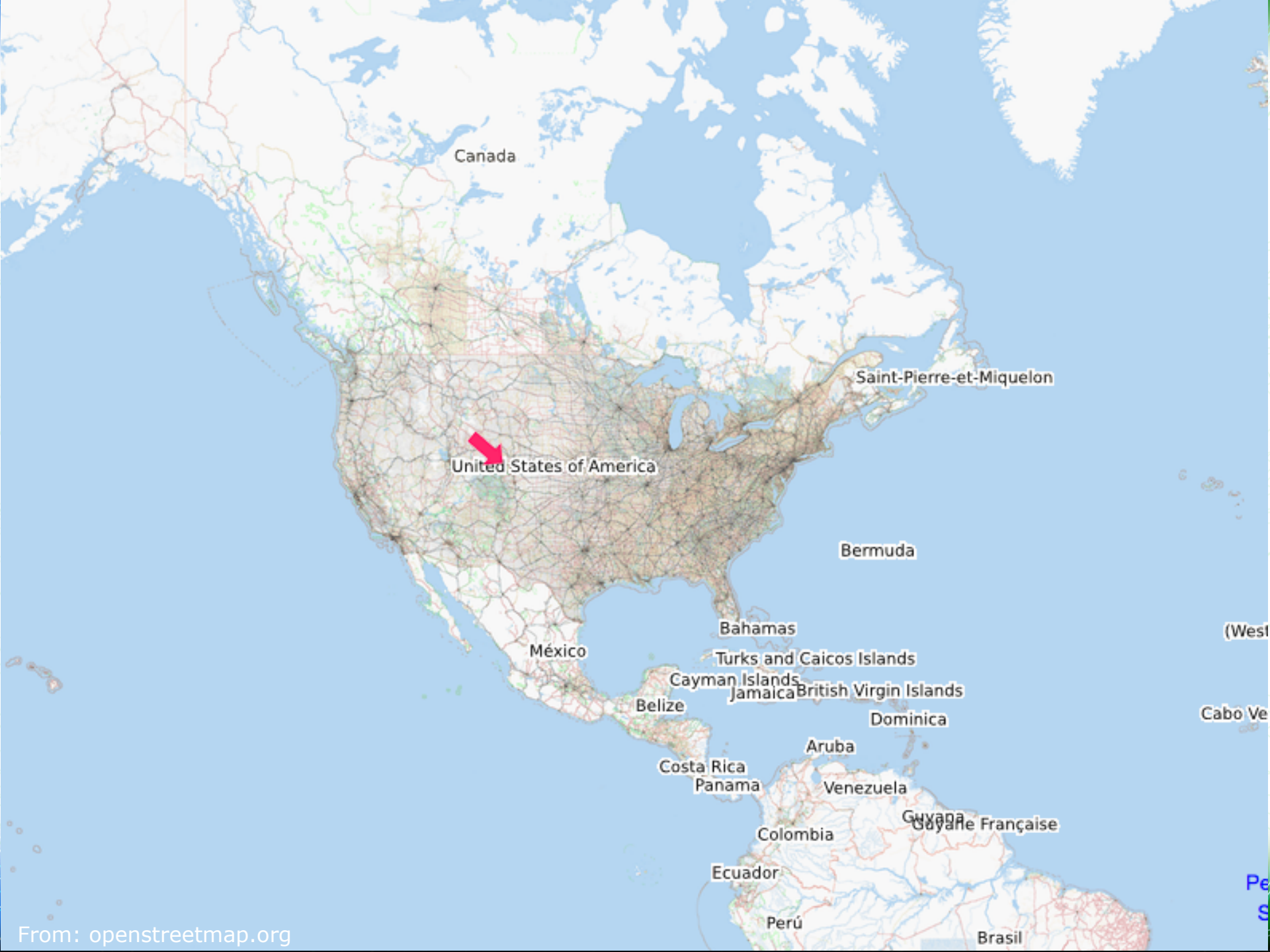
Local Chapters

In Formation

- Africa
- Australia/New Zealand
- Brazil
- Canada
- Czech
- Deutsch Language
- Dutch Language
- European Network →
- Finland
- Greek
- Indonesia
- Israel (Hebrew Language)
- Portugal
- Romania
- Sudamerica
- Scotland
- Taiwan
- Thailand
- California (USA)
- More...







Canada

Saint-Pierre-et-Miquelon

United States of America

Bermuda

Bahamas

México

Turks and Caicos Islands

Cayman Islands

Jamaica British Virgin Islands

Belize

Dominica

Costa Rica

Panama

Aruba

Venezuela

Guyana

Guayane Française

Colombia

Ecuador

Perú

Brasil

(West

Cabo Ve

Pe

S

**Autodesk**

**INGRES**

**INPE**  
MINISTÉRIO DA AERONÁUTICA E ESPACIOS  
INSTITUTO NACIONAL DE PESQUISAS ESPACIAIS

**OS** Ordnance  
Survey®

**T**Spatial

**ASTUN**  
TECHNOLOGY

**borealis**  
WWW.BOREAL-IS.COM

**camp**to**camp**

**FIRSTBASE**SOLUTIONS

**G** **GEOCAT**

**IGN**  
INSTITUT  
GEOGRAPHIQUE  
NATIONAL

**LIZARDTECH**  
a **celartem** Company

**Metaspatial**

**PCI**  
Geomatics

## Contact Me

52.1534 N, 122.1498 W 

**TYLER MITCHELL**

---

Executive Director

[OSGeo.org](http://OSGeo.org)

---

[tmitchell@osgeo.org](mailto:tmitchell@osgeo.org)

Tel +1-250-303-1831

